

July 12, 2006

Tomato Problems



[Septoria Leaf Spot](#)



[Early Blight](#)



[Leaf spot diseases out of control.](#)



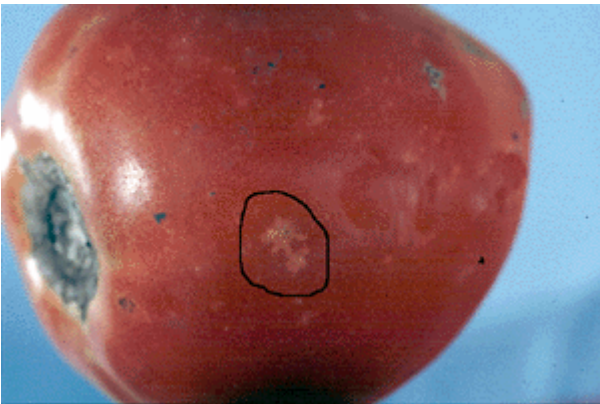
[Blossom End Rot](#)



Physiological Leaf Roll



Herbicide damage



Stink bug damage.



Sunscald



Tomatoes not setting fruit.



Spider mite damage.