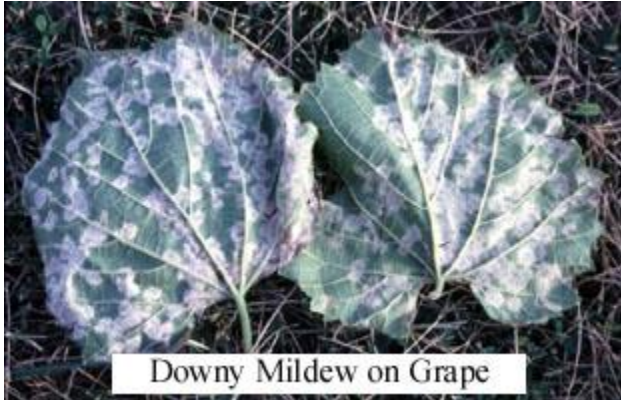


**Problem:** Grapes, Downy Mildew



**Hosts:** Grapes

**Description:** This wet-weather fungus attacks both the leaves and fruit. Small yellow spots initially develop on the upper surface of the leaf. If you flip the leaf over, you will find a fluffy white growth on the surface. This should not be confused with powdery mildew that causes a dusty white growth on the upper leaf surface.

**Recommendations:** There are many products labeled for downy mildew. Commercial apple growers or other large-scale growers should consult the current Midwest Fruit Pest Management Guide at the following website: <https://store.extension.iastate.edu/product/14488>

Please refer to the full guide and read the product labels for information on timing, safety, resistance management, and pre-harvest restrictions. Captan, Fruit Tree Sprays (Bonide Fruit Tree Spray) and copper compounds (Bonide Copper Fungicide, Bonide Liquid Copper) may be available for homeowner use.

**References:**

[Midwest Fruit Pest Management Guide](#), Midwest Fruit Workers Group, K-State Research & Extension pub MF3278

**Last Update:** 1/18/2018

---

Brand names appearing in this publication are for product identification purposes only. No endorsement is intended, nor is criticism implied of similar products not mentioned.

*“Knowledge for Life”*

Kansas State University Agricultural Experiment Station and Cooperative Extension Service