

June 21, 2022

---

## Tomato Problems

---



[Septoria Leaf Spot](#)



[Early Blight](#)



[Leaf spot diseases out of control](#)



[Blossom End Rot](#)

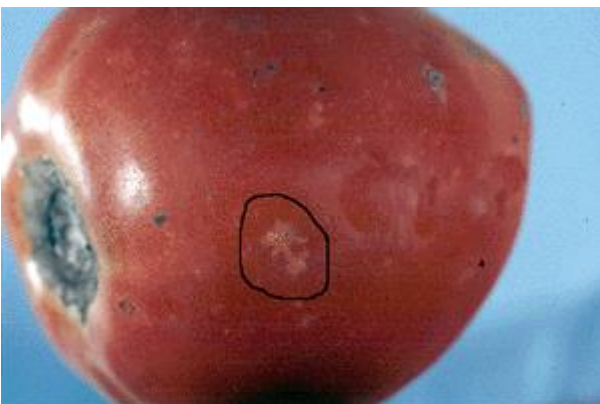
Continued on Following Page



[Physiological Leaf Roll](#)



[Herbicide damage](#)



[Stink bug damage](#)



[Sunscald](#)



[Tomato Hornworm](#)



[Tomato Fruitworm](#)

Continued on Following Page



[Tomatoes not setting fruit](#)



[Spider mite damage](#)



[Tomato Cracking](#)

---

Brand names appearing in this publication are for product identification purposes only. No endorsement is intended, nor is criticism implied of similar products not mentioned.

*“Knowledge for Life”*

Kansas State University Agricultural Experiment Station and Cooperative Extension Service