

August 15, 2023

Tomato Problems



[Septoria Leaf Spot](#)



[Early Blight](#)



[Leaf spot diseases out of control](#)



[Blossom End Rot](#)

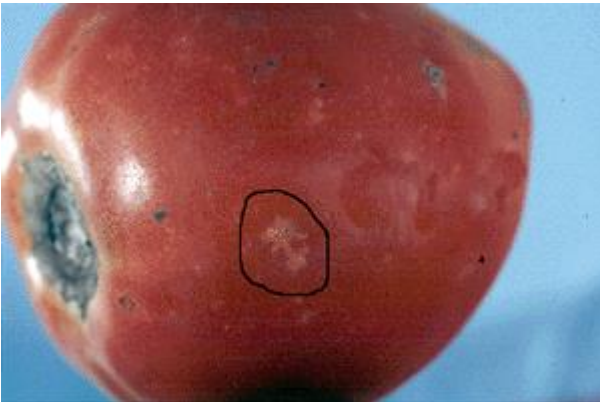
Continued on Following Page



[Physiological Leaf Roll](#)



[Herbicide damage](#)



[Stink bug damage](#)



[Sunscald](#)



[Tomato Hornworm](#)



[Tomato Fruitworm](#)

Continued on Following Page



[Tomatoes not setting fruit](#)



[Spider mite damage](#)



[Tomato Cracking](#)



[Anthracnose](#)

Brand names appearing in this publication are for product identification purposes only. No endorsement is intended, nor is criticism implied of similar products not mentioned.

“Knowledge for Life”

Kansas State University Agricultural Experiment Station and Cooperative Extension Service